



SAFETY SHOES

WORK CLOTH

PROTECTIVE EQUIPMENT



LLC "VALTEX"

«Valtex» appreciates the reputation as a reliable partner and build up bussiness on the principles of trust, respection and high competence.



SAFETY SHOES

There is own production capacity of manufacturing of footwear. Includ-
ing the utilities of the manufacturing of main insole with protection
properties which prevent foot from the injury.



WORK CLOTHES

Clothes manufacturing workshop lets
manufacture any tailoring order.
Including logo application.



PERSONAL PROTECTIVE EQUIPMENT

The representetives, official dillers, native and foreign
manufacturers of personal protective equipment

ABOUT COMPANY

VALTEX



FOOTWEAR - CLOTHING - PPE

Our main advantages are:

1. Availability of own production facilities of work footwear and special clothing
2. Possibility of modifying models according to the individual needs of the customer
3. The company owns the transport logistics department and department of foreign economic activity
4. Well-established wholesale distribution system throughout Ukraine
5. Individual solutions for each customer
6. Comprehensive customer service
7. Flexible system of discounts
8. Existing ISO production certification, all products are certified in accordance to international standards and state standards of Ukraine

"Valtex" harmoniously combines the traditions of a manufacturing enterprise with its own history since 1928 and the features of a young company with dynamic development, which is characterized by novelty of the ideas, non-standard approach to solving problems and constant modernization of production, management and administration.

Today we can proudly say that the **Valtex brand is one of the leaders on the Ukrainian market** and increasingly popular in the markets of EU due to the high quality of products and affordability for customers .

100% of products are manufactured in Ukraine, which provides workplaces and is the engine of the country and the city industry

Studying the world experience and following market trends, our specialists implement modern production technologies and **develop models using modern materials in accordance to current standards.**

«Valtex» values its reputation of a reliable partner and builds its business on the principles of trust, respect and high competence!

FOOTWEAR

in a cut form



*boots "King"

INSOLES

FELT
(SOFT HEEL)



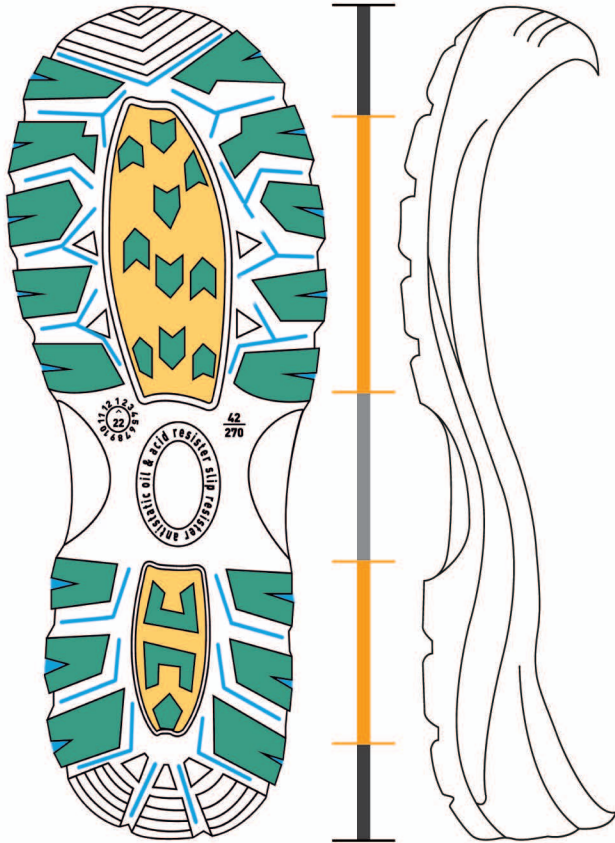
FOILED (WINTER)



WITH MEMORY EFFECT
(MEMORY FOAM)













INFO



SOLE:

- Part of the roll heel and toe with a padding
- The main part of the running layer
- Ankle part with additional information
- Anti-shock softening part
- Main running gear
- Water drainage

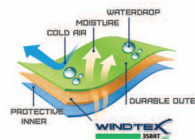
PICTOGRAMS OF FOOTWEAR PROPERTIES:

- | | | | |
|---|--------------------------|---|-----------------|
|  | Absorption of vibrations |  | Anti-shock heel |
|  | Heat resistance |  | Hydrophobicity |
|  | Acid resistance |  | Anti-puncture |
|  | Dielectric |  | TOE CAP TYPE |
|  | Oil and petrol resistant |  | Insulated shoes |

MATERIAL



Cordura is a thick nylon fabric with a special thread structure, with water-repellent impregnation and polyurethane coating. Cordura was originally intended for the army. The fabric is processed in several steps and the coating is very high-quality and lasts for a long time.



Microporous two-component PTFE membrane with very high water resistance, breathability and durability.



Manufacturer of materials for safety footwear.
 Production of soft and flexible fabrics for the top, lining, puncture protection insoles, which accord ISO 12568.2010.
 Fabrics have high abrasion resistance.
 and can be supplied with a fireproof and water repellent processing.



LOW BOOTS

STEP



Shoe upper material: vamp, back, quarter – genuine leather. Soft edging, valve - artificial material. Substrate – nonwoven fabric, dubbed with foam rubber . Anti-corrosion fittings. **Toe protection:** thermoplastic toe cap (50J) or metal (200J) or composite (200J).

Shoe bottom material: set-in insole – nonwoven fabric or kevlar. Insole - formed comfortable

Sole: foam polyurethane with ribbed forefoot (wear-resistant, oil and petrol resistant, acid resistant). The properties of the running surface: antistatic, anti-slip profile.

STANDART:



COMPLETE SET*



COMPLETE SET* - MODIFICATION IS POSSIBLE AT THE REQUEST OF THE CUSTOMER

STEP+

Shoe upper material: vamp, back, quarter - genuine leather up to 2 mm. Soft edging and valve made of genuine or artificial leather 1.5 mm. Reflective tape. Substrate under the vamp - nonwoven fabric. substrate under the quarter - three-layer breathable mesh with foam rubber. Anti-corrosion fittings. **Toe protection:** thermoplastic toe cap (50J) or metal (200J) or composite (200J).

Shoe bottom material: set-in insole – nonwoven fabric or kevlar. Insole - formed comfortable

Sole: foam polyurethane with ribbed forefoot (wear-resistant, oil and petrol resistant, acid resistant). The properties of the running surface: antistatic, anti-slip profile.



STANDART:



COMPLETE SET*



COMPLETE SET* - MODIFICATION IS POSSIBLE AT THE REQUEST OF THE CUSTOMER

EPSILON



Shoe upper material: vamp, valve, back, quarter, soft edging – genuine leather. Substrate – three-layer breathable mesh with foam rubber. Anti-corrosion fittings.

Shoe bottom material: set-in insole – nonwoven fabric or kevlar. Insole - formed comfortable

Sole: foam polyurethane (wear-resistant, oil and petrol resistant, acid resistant). The properties of the running surface: antistatic and anti-slip profile.

STANDART:



COMPLETE SET*



COMPLETE SET* - MODIFICATION IS POSSIBLE AT THE REQUEST OF THE CUSTOMER

LOW BOOTS

SPRINT BEIGE.



Low boots of the adhesive method of attaching the sole are made of genuine leather and textile elements. Represent itself a design with tuning vamp, quarter, back, soft edging and overlay with anti-corrosion fittings. For the substrate under the vamp and quarter is used substrate material, which provides hygroscopicity and breathability of footwear.

Toe cap and back – thermoplastic

Main insole — footwear cardboard. Insole - formed three-layer with antibacterial coating

Sole – polyurethane

STANDART:



COMPLETE SET*



COMPLETE SET* - MODIFICATION IS POSSIBLE AT THE REQUEST OF THE CUSTOMER

SPRINT BLACK

Low boots of the adhesive method of attaching the sole are made of genuine leather with textile elements. Represent itself a design with tuning vamp, quarter, back, soft edging and and overlay with anti-corrosion fittings. For the substrate under the vamp and quarter is used substrate material, which provides hygroscopicity and breathability of footwear

Toe cap and back – thermoplastic

Main insole — footwear cardboard. Insole - formed three-layer with antibacterial coating

Sole – polyurethane



STANDART:



COMPLETE SET*



COMPLETE SET* - MODIFICATION IS POSSIBLE AT THE REQUEST OF THE CUSTOMER



LOW BOOTS

EXPEDITOR



Shoe upper material: vamp, back, quarter – artificial materials. The outer mesh with polyurethane inserts provides the protection from mechanical damage. Textile loops and anti-corrosion fittings. **Toe protection:** thermoplastic toe cap (50J) or metal (200J) or composite (200J).

Shoe bottom material: set-in insole – nonwoven fabric or kevlar. Insole - formed comfortable

Sole: foam polyurethane (wear-resistant, oil and petrol resistant, acid resistant). The properties of the running surface: antistatic and anti-slip profile.

STANDART:



COMPLETE SET*



COMPLETE SET* - MODIFICATION IS POSSIBLE AT THE REQUEST OF THE CUSTOMER

DURABLE

Shoe upper material: vamp, back, quarter – artificial materials. The outer mesh with polyurethane inserts. The leather on the toe part provides the protection from mechanical damage. The substrate under the vamp, soft edging and valve - three-layer breathable mesh with foam rubber. Reflective paint applied. The loops — textile and plastic. **Toe protection:** thermoplastic toe cap (50J) or metal (200J) or composite (200J).

Shoe bottom material: set-in insole – nonwoven fabric or kevlar. Insole - formed comfortable

Sole: foam polyurethane (wear-resistant, oil and petrol resistant, acid resistant). The properties of the running surface: antistatic and anti-slip profile.



STANDART:



COMPLETE SET*



COMPLETE SET* - MODIFICATION IS POSSIBLE AT THE REQUEST OF THE CUSTOMER

CROSER



Shoe upper material: vamp, back, quarter - split velor. Platisol pad is used for lacing. Substrate and valve - three-layer breathable mesh with foam rubber. **Toe protection:** thermoplastic toe cap (50J) or metal (200J) or composite (200J).

Shoe bottom material: set-in insole – nonwoven fabric or kevlar. Insole - formed comfortable

Sole: foam polyurethane (wear-resistant, oil and petrol resistant, acid resistant). The properties of the running surface: antistatic and anti-slip profile.

STANDART:



COMPLETE SET*



COMPLETE SET* - MODIFICATION IS POSSIBLE AT THE REQUEST OF THE CUSTOMER



FOOTWEAR

CLOTH

PPE



WALTEX.ORG.UA

SANDALS

AERO



Shoe upper material: perforated vamp, back – genuine leather. Soft edging — artificial material. Substrate – textile material dubbed with foam rubber. Anti-corrosion fittings. **Toe protection:** thermoplastic toe cap (50J) or metal (200J) or composite (200J).

Shoe bottom material: set-in insole – nonwoven fabric or kevlar. Insole - formed comfortable

Sole: foam polyurethane with ribbed forefoot (wear-resistant, oil and petrol resistant, acid resistant). The properties of the running surface: antistatic, anti-slip profile.

STANDART:



COMPLETE SET*



COMPLETE SET* - MODIFICATION IS POSSIBLE AT THE REQUEST OF THE CUSTOMER

AERO+

Shoe upper material: vamp, back, quarter - genuine leather up to 2 mm. Substrate under the vamp - nonwoven fabric. Substrate under the quarter - three-layer breathable mesh with foam rubber. Velcro closure.

Toe protection: thermoplastic toe cap (50J) or metal (200J) or composite (200J).

Shoe bottom material: set-in insole – nonwoven fabric or kevlar. Insole - formed comfortable

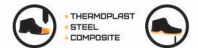
Sole: foam polyurethane with ribbed forefoot (wear-resistant, oil and petrol resistant, acid resistant). The properties of the running surface: antistatic, anti-slip profile.



STANDART:



COMPLETE SET*



COMPLETE SET* - MODIFICATION IS POSSIBLE AT THE REQUEST OF THE CUSTOMER

AERO+ (VELOR)



Shoe upper material: vamp, back, quarter - split velor. Substrate under the vamp - nonwoven fabric. Substrate under the quarter - three-layer breathable mesh with foam rubber. Velcro closure. **Toe protection:** thermoplastic toe cap (50J) or metal (200J) or composite (200J).

Shoe bottom material: set-in insole – nonwoven fabric or kevlar. Insole - formed comfortable

Sole: foam polyurethane with ribbed forefoot (wear-resistant, oil and petrol resistant, acid resistant). The properties of the running surface: antistatic, anti-slip profile.

STANDART:



COMPLETE SET*



COMPLETE SET* - MODIFICATION IS POSSIBLE AT THE REQUEST OF THE CUSTOMER

SANDALS

KUROU



Shoe upper material: perforated vamp, back, soft edging – split velor. Substrate – textile material dubbed with foam rubber. Velcro closure.
Toe protection: thermoplastic toe cap (50J) or metal (200J) or composite (200J).

Shoe bottom material: set-in insole – nonwoven fabric or kevlar. Insole - formed comfortable

Sole: foam polyurethane (wear-resistant, oil and petrol resistant, acid resistant). The properties of the running surface: antistatic and anti-slip profile.

STANDART:



COMPLETE SET*



COMPLETE SET* - MODIFICATION IS POSSIBLE AT THE REQUEST OF THE CUSTOMER

FERER

Shoe upper material: perforated vamp, back, soft edging – genuine leather. Substrate – textile material dubbed with foam rubber. Velcro closure. Anti-corrosion fittings. **Toe protection:** thermoplastic toe cap (50J) or metal (200J) or composite (200J).

Shoe bottom material: set-in insole – nonwoven fabric or kevlar. Insole - formed comfortable

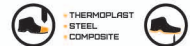
Sole: foam polyurethane (wear-resistant, oil and petrol resistant, acid resistant). The properties of the running surface: antistatic and anti-slip profile.



STANDART:



COMPLETE SET*



COMPLETE SET* - MODIFICATION IS POSSIBLE AT THE REQUEST OF THE CUSTOMER

FAUN



Shoe upper material: vamp, back, soft edging – genuine leather. Substrate and valve - nonwoven fabric. Anti-corrosion fittings. **Toe protection:** thermoplastic toe cap (50J) or metal (200J) or composite (200J).

Shoe bottom material: set-in insole – nonwoven fabric or kevlar. Insole - formed comfortable

Sole: foam polyurethane (wear-resistant, oil and petrol resistant, acid resistant). The properties of the running surface: antistatic and anti-slip profile.

STANDART:



COMPLETE SET*



COMPLETE SET* - MODIFICATION IS POSSIBLE AT THE REQUEST OF THE CUSTOMER

BOOTS

STANDARD



Shoe upper material: vamp, back – genuine leather. Soft edging and valve – artificial material. Substrate – non-woven material, duplicated with foam rubber. Anti-corrosion fittings. **Toe protection:** thermoplastic toe cap (50J) or metal (200J) or composite (200J).

Shoe bottom material: set-in insole – nonwoven fabric or kevlar. Insole - formed comfortable

Sole: foam polyurethane with ribbed forefoot (wear-resistant, oil and petrol resistant, acid resistant). The properties of the running surface: antistatic, anti-slip profile.

STANDART:



COMPLETE SET*



COMPLETE SET* - MODIFICATION IS POSSIBLE AT THE REQUEST OF THE CUSTOMER

AVALON

Shoe upper material: vamp, back, soft edging – artificial material (microfiber). Substrate and valve – non-woven material, duplicated with foam rubber. Anti-corrosion fittings. **Toe protection:** thermoplastic toe cap (50J) or metal (200J) or composite (200J).

Shoe bottom material: set-in insole – nonwoven fabric or kevlar. Insole - formed comfortable

Sole: foam polyurethane (wear-resistant, oil and petrol resistant, acid resistant). The properties of the running surface: antistatic, anti-slip profile.



STANDART:



COMPLETE SET*



COMPLETE SET* - MODIFICATION IS POSSIBLE AT THE REQUEST OF THE CUSTOMER

KONKER



Shoe upper material: vamp, back, quarter, soft edging, valve – genuine leather. Substrate – non-woven material, duplicated with foam rubber. Anti-corrosion fittings. **Toe protection:** thermoplastic toe cap (50J) or metal (200J) or composite (200J).

Shoe bottom material: set-in insole – nonwoven fabric or kevlar. Insole - formed comfortable

Sole: foam polyurethane (wear-resistant, oil and petrol resistant, acid resistant). The properties of the running surface: antistatic, anti-slip profile.

STANDART:



COMPLETE SET*



COMPLETE SET* - MODIFICATION IS POSSIBLE AT THE REQUEST OF THE CUSTOMER

BOOTS

KING



Shoe upper material: vamp, back – genuine leather. Soft edging and valve – artificial material. Substrate - non-woven material, duplicated with foam rubber. Anti-corrosion fittings. **Toe protection:** thermoplastic toe cap (50J) or metal (200J) or composite (200J).

Shoe bottom material: set-in insole – nonwoven fabric or kevlar. Insole - formed comfortable

Sole: foam polyurethane with ribbed forefoot (wear-resistant, oil and petrol resistant, acid resistant). The properties of the running surface: antistatic, anti-slip profile.

STANDART:



COMPLETE SET*



COMPLETE SET* - MODIFICATION IS POSSIBLE AT THE REQUEST OF THE CUSTOMER

KING+

Shoe upper material: vamp, back, quarter - genuine leather up to 2 mm. Soft edging and valve made of genuine or artificial leather 1.5 mm. Reflective tape. Substrate under the vamp - nonwoven fabric. Substrate under the quarter and valve - three-layer breathable mesh with foam rubber. **Toe protection:** thermoplastic toe cap (50J) or metal (200J) or composite (200J).

Shoe bottom material: set-in insole – nonwoven fabric or kevlar. Insole - formed comfortable

Sole: foam polyurethane with ribbed forefoot (wear-resistant, oil and petrol resistant, acid resistant). The properties of the running surface: antistatic, anti-slip profile.



STANDART:



COMPLETE SET*



COMPLETE SET* - MODIFICATION IS POSSIBLE AT THE REQUEST OF THE CUSTOMER



BOOTS

SCOUT



Shoe upper material: vamp, back – genuine leather. Quarter and valve – genuine leather or artificial material. Soft edging – artificial material. Substrate – nonwoven fabric. Anti-corrosion fittings.

Toe protection: thermoplastic toe cap (50J)

Shoe bottom material: main insole – microfiber

Sole: formed rubber (wear-resistant, anti-slip).

STANDART:



COMPLETE SET*



COMPLETE SET* - MODIFICATION IS POSSIBLE AT THE REQUEST OF THE CUSTOMER

VIKING BEIGE.

Shoe upper material: vamp and back - split nubuck with textile inserts. Soft edging and valve – non-woven material. Anatomically corrective lacing. Textile inserts provides comfort, hygroscopicity and breathability of footwear. Substrate – nonwoven fabric, duplicated with foam rubber. Anti-corrosion fittings. **Toe protection:** thermoplastic toe cap (50J) or metal (200J) or composite (200J).

Shoe bottom material: set-in insole – nonwoven fabric or kevlar. Insole - formed comfortable

Sole: foam polyurethane (wear-resistant, oil and petrol resistant, acid resistant). The properties of the running surface: antistatic, anti-slip profile.



STANDART:



COMPLETE SET*



COMPLETE SET* - MODIFICATION IS POSSIBLE AT THE REQUEST OF THE CUSTOMER

PHANTOM



Shoe upper material: vamp and back - split nubuck with textile inserts. Soft edging and valve – non-woven material. Anatomically corrective lacing. Textile inserts provides comfort, hygroscopicity and breathability of footwear. Substrate – nonwoven fabric, duplicated with foam rubber. Anti-corrosion fittings. **Toe protection:** thermoplastic toe cap (50J).

Bottom part material: insole – footwear carton. Anatomically shaped second insole made of 3-layer material with antibacterial properties padded at the heel.

Sole: deeply grooved formed rubber (the depth of protector in the beam and heel part is 6 mm).

STANDART:



COMPLETE SET*



COMPLETE SET* - MODIFICATION IS POSSIBLE AT THE REQUEST OF THE CUSTOMER



facebook
@VALTEX.SAFETY



FOR WELDERS

WELDER BOOT



Shoe upper material: vamp, back, soft edging – genuine leather. Substrate and valve - nonwoven fabric. Anti-corrosion fittings.

Toe protection: thermoplastic toe cap (50J) or metal (200J) or composite (200J).

Shoe bottom material: set-in insole – nonwoven fabric or kevlar. Insole - formed comfortable

Sole: foam polyurethane with ribbed forefoot (wear-resistant, oil and petrol resistant, acid resistant). The properties of the running surface: antistatic, anti-slip profile.

STANDART:



COMPLETE SET*



COMPLETE SET* - MODIFICATION IS POSSIBLE AT THE REQUEST OF THE CUSTOMER

LOW BOOT WELDER

Shoe upper material: vamp, back, valve, soft edging – genuine leather. Substrate - nonwoven fabric. Anti-corrosion fittings.

Toe protection: thermoplastic toe cap (50J) or metal (200J) or composite (200J).

Shoe bottom material: set-in insole – nonwoven fabric or kevlar. Insole - formed comfortable

Sole: foam polyurethane with ribbed forefoot (wear-resistant, oil and petrol resistant, acid resistant). The properties of the running surface: antistatic, anti-slip profile.



STANDART:



COMPLETE SET*



COMPLETE SET* - MODIFICATION IS POSSIBLE AT THE REQUEST OF THE CUSTOMER

BRUCK



Shoe upper material: vamp, back, soft edging – genuine leather. Substrate and valve - nonwoven fabric. Anti-corrosion fittings.

Toe protection: thermoplastic toe cap (50J) or metal (200J) or composite (200J).

Shoe bottom material: set-in insole – nonwoven fabric or kevlar. Insole - formed comfortable

Sole: foam polyurethane (wear-resistant, oil and petrol resistant, acid resistant). The properties of the running surface: antistatic, anti-slip profile.

STANDART:



COMPLETE SET*



COMPLETE SET* - MODIFICATION IS POSSIBLE AT THE REQUEST OF THE CUSTOMER

FOR WELDERS

VULKAN



Shoe upper material: vamp, protective valve, back, soft edging – genuine leather, tongue, substrate - nonwoven fabric, anti-corrosion fittings. **Toe protection:** thermoplastic toe cap (50J) or metal (200J) or composite (200J).

Shoe bottom material: set-in insole – nonwoven fabric or kevlar. Insole - formed comfortable

Sole: high protection nitrile.

STANDART:



COMPLETE SET*



COMPLETE SET* - MODIFICATION IS POSSIBLE AT THE REQUEST OF THE CUSTOMER

VULKAN +

REINFORCED SOLE

Shoe upper material: vamp, protective valve, back, soft edging – genuine leather, tongue, substrate - nonwoven fabric, anti-corrosion fittings. **Toe protection:** thermoplastic toe cap (50J) or metal (200J) or composite (200J).

Shoe bottom material: set-in insole – nonwoven fabric or kevlar. Insole - formed comfortable

Sole: high protection nitrile with increased protector height and sole thickness.



STANDART:



COMPLETE SET*



COMPLETE SET* - MODIFICATION IS POSSIBLE AT THE REQUEST OF THE CUSTOMER

VALTEX
SINCE 1928

FOOTWEAR - CLOTHING - PPE

VALTEX
SINCE 1928

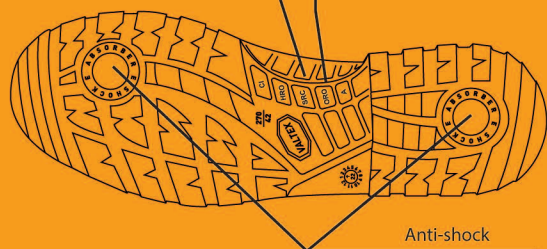
SOLE «TREKKING»

This sole features a molded construction that combines different layers to provide maximum comfort, protection and support for the foot. The sole consists of a running layer, which is made of **vulcanized rubber** compound for reliable adhesion on different surfaces and polyurethane for connection. The upper part of the boot and the running part of the sole are placed in a specially designed mold, and then an **intermediate layer of polyurethane** is poured into it. In this way, the upper, the midsole and the sole are connected and form a reliable whole structure. Due to such system, we get all the advantages of sole materials and exclude their disadvantages.



- CI - insulation of the foot from the cold to -17°C
- HRO - contact heating resistance 300°C
- SRC - slip resistance SRA+SRB
- ORO - oil and petrol resistant sole
- A - antistatic properties

In the middle has a plastic shank



Plastic shank

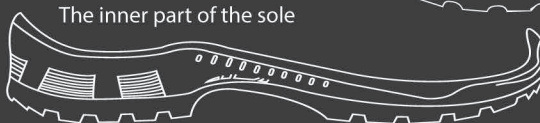


The molded polyurethane midsole is designed with an additional rise on both sides to protect the outer and inner part of the footwear, providing a more secure foot hold and additional protection from dislocation. The sole in the middle **has a plastic shank** (supinator) to support the longitudinal arch of the foot and acts as an elastic beam (springs) to reduce the load on the foot. The shank plays an important role in ensuring the physical durability and dimensional stability of the footwear.

The outer part of the sole raised to prevent foot dislocation



The inner part of the sole



TREKKING BOOTS

JAGUAR



Shoe upper material: waterproof nubuck. Nylon 6.6 (Cordura). The special protective material is Baicast on the toe and heel parts. Substrate – winter or summer, made on membrane base. Textile loops and anti-corrosion fittings. thermoplastic toe cap (50J).

Shoe bottom material: set-in insole – kevlar.
Insole – winter or summer.

Sole: running layer is made of rubber (wear-resistant, anti-slipping), the intermediate layer is polyurethane.

STANDART:



COMPLETE SET*



COMPLETE SET* - MODIFICATION IS POSSIBLE AT THE REQUEST OF THE CUSTOMER

ALEX LOW

Shoe upper material: waterproof nubuck. Nylon 6.6 (Cordura). Substrate – winter or summer, made on membrane base. Textile loops and anti-corrosion fittings. thermoplastic toe cap (50J).

Shoe bottom material: set-in insole – kevlar.
Insole – winter or summer.

Sole: running layer is made of rubber (wear-resistant, anti-slipping), the intermediate layer is polyurethane.



STANDART:



COMPLETE SET*



COMPLETE SET* - MODIFICATION IS POSSIBLE AT THE REQUEST OF THE CUSTOMER



HIGHT BOOTS

START



Shoe upper material: Vamp, quarter, back - genuine hydrophobic leather chrome tuning method. Substrate, soft edging, valve – combitex. Anti-corrosion fittings. Toe protection: thermoplastic toe cap (50J).

Shoe bottom material: set-in insole – nonwoven fabric or kevlar. Insole - formed comfortable

Sole: wear-resistant formed rubber with deep self-cleaning protector (wear-resistant, anti-slipping). Sole Attachment Method – glue stitching.

STANDART:



COMPLETE SET*



COMPLETE SET* - MODIFICATION IS POSSIBLE AT THE REQUEST OF THE CUSTOMER

VARTA

Shoe upper material: Vamp, quarter, back - genuine hydrophobic leather, chrome tuning method with textile inserts. Quarter substrate: leather, 0,6-1,0 mm wide. Valve quarter inserts - synthetic material based on "nylon". Valve substrate - substrate material, dubbed material with summer membrane coating. Anti-corrosion fittings. Toe protection: thermoplastic toe cap (50J).

Shoe bottom material: Set-in insole – saddlecloth 4-5 mm wide.

Sole: wear-resistant formed rubber with deep self-cleaning protector. (wear-resistant, anti-slipping). Sole Attachment Method – glue stitching.



STANDART:



COMPLETE SET*



COMPLETE SET* - MODIFICATION IS POSSIBLE AT THE REQUEST OF THE CUSTOMER

TRECK



Shoe upper material: vamp, back, quarter, valve – chrome tuning method genuine leather substrate – nonwoven material. Anti-corrosion fittings.

Toe protection: thermoplastic toe cap (50J).

Shoe bottom material: microfiber

Sole: wear-resistant formed rubber with deep self-cleaning protector. (wear-resistant, anti-slipping). Sole Attachment Method – glue stitching.

STANDART:



COMPLETE SET*



COMPLETE SET* - MODIFICATION IS POSSIBLE AT THE REQUEST OF THE CUSTOMER

TREKKING BOOTS

ALEX



Shoe upper material: Nylon 6.6 (Cordura) with decorative overlays made of waterproof nubuck. The special protective material is Baicast on the toe and heel parts. Substrate – summer, made on membrane base. Textile loops and anti-corrosion fittings.

Shoe bottom material: set-in insole – kevlar.
Insole – summer.

Sole: running layer is made of rubber (wear-resistant, anti-slipping), the intermediate layer is polyurethane.

STANDART:



COMPLETE SET*



COMPLETE SET* - MODIFICATION IS POSSIBLE AT THE REQUEST OF THE CUSTOMER

BRIG

Shoe upper material: chrome tanning method genuine leather. Nylon 6.6 (Cordura). The special protective material is Baicast on the toe and heel parts. Substrate – winter or summer, made on membrane base. Textile loops and anti-corrosion fittings. thermoplastic toe cap (50J).

Shoe bottom material: set-in insole – kevlar.
Insole – winter or summer.

Sole: running layer is made of rubber (wear-resistant, anti-slipping), the intermediate layer is polyurethane.



STANDART:



COMPLETE SET*



COMPLETE SET* - MODIFICATION IS POSSIBLE AT THE REQUEST OF THE CUSTOMER

DEXTER



Shoe upper material: waterproof nubuck. Nylon 6.6 (Cordura). Substrate – winter or summer, made on membrane base. Anti-corrosion fittings. Toe protection: thermoplastic toe cap (50J).

Shoe bottom material: set-in insole – kevlar. Insole – winter or summer.

Sole: running layer is made of rubber (wear-resistant, anti-slipping), the intermediate layer is polyurethane.

СТАНДАРТ:



КОМПЛЕКТАЦІЯ*:



КОМПЛЕКТАЦІЯ* - МОЖЛИВА МОДИФІКАЦІЯ ПО БАЖАННЮ КЛІЄНТА

TREKKING BOOTS

TRITON



Shoe upper material: waterproof nubuck. Nylon 6.6 (Cordura). The special protective material is Baicast on the toe and heel parts. Substrate – winter or summer, made on membrane base. Textile loops and anti-corrosion fittings. thermoplastic toe cap (50J).

Shoe bottom material: set-in insole – kevlar.
Insole – winter or summer.

Sole: running layer is made of rubber (wear-resistant, anti-slipping), the intermediate layer is polyurethane.

STANDART:



COMPLETE SET*



COMPLETE SET* - MODIFICATION IS POSSIBLE AT THE REQUEST OF THE CUSTOMER

TRITON BLACK

Shoe upper material: waterproof nubuck (black). Nylon 6.6 (Cordura). The special protective material is Baicast on the toe and heel parts. Substrate – winter or summer, made on membrane base. Textile loops and anti-corrosion fittings. thermoplastic toe cap (50J).

Shoe bottom material: set-in insole – kevlar.
Insole – winter or summer.

Sole: running layer is made of rubber (wear-resistant, anti-slipping), the intermediate layer is polyurethane.



STANDART:



COMPLETE SET*



COMPLETE SET* - MODIFICATION IS POSSIBLE AT THE REQUEST OF THE CUSTOMER

TRITON (CHROME)



Shoe upper material: chrome tanning method genuine leather. Nylon 6.6 (Cordura). The special protective material is Baicast on the toe and heel parts. Substrate – winter or summer, made on membrane base. Textile loops and anti-corrosion fittings. thermoplastic toe cap (50J).

Shoe bottom material: set-in insole – kevlar.
Insole – winter or summer.

Sole: running layer is made of rubber (wear-resistant, anti-slipping), the intermediate layer is polyurethane.

СТАНДАРТ:



КОМПЛЕКТАЦІЯ*:



КОМПЛЕКТАЦІЯ* - МОЖЛИВА МОДИФІКАЦІЯ ПО БАЖАННЮ КЛІЄНТА



TREKKING SHOES FOR SAFETY LIFE

HIGHT BOOTS

COBRA



STANDART:



COMPLETE SET*



COMPLETE SET* - MODIFICATION IS POSSIBLE AT THE REQUEST OF THE CUSTOMER

Shoe upper material: vamp, back – genuine leather. Soft edging and valve – artificial material. Substrate – combitex. Anti-corrosion fittings.
Toe protection: thermoplastic toe cap (50J) or metal (200J) or composite (200J).

Shoe bottom material: set-in insole – nonwoven fabric or kevlar. Insole - formed comfortable

Sole: foam polyurethane with ribbed forefoot (wear-resistant, oil and petrol resistant, acid resistant). The properties of the running surface: antistatic, anti-slip profile.



COBRA VELOURS

Shoe upper material: vamp, back – split velor. Soft edging and valve – artificial material. Substrate – combitex. Anti-corrosion fittings.
Toe protection: thermoplastic toe cap (50J) or metal (200J) or composite (200J).

Shoe bottom material: set-in insole – nonwoven fabric or kevlar. Insole - formed comfortable

Sole: foam polyurethane with ribbed forefoot (wear-resistant, oil and petrol resistant, acid resistant). The properties of the running surface: antistatic, anti-slip profile.



STANDART:



COMPLETE SET*



COMPLETE SET* - MODIFICATION IS POSSIBLE AT THE REQUEST OF THE CUSTOMER



HIGHT BOOTS

KRAG



Shoe upper material: vamp, back – genuine leather. Soft edging and valve – artificial material. Substrate – combitex. Anti-corrosion fittings.
Toe protection: thermoplastic toe cap (50J) or metal (200J) or composite (200J).

Shoe bottom material: set-in insole – nonwoven fabric or kevlar. Insole - formed comfortable

Sole: foam polyurethane with ribbed forefoot (wear-resistant, oil and petrol resistant, acid resistant). The properties of the running surface: antistatic, anti-slip profile.

STANDART:



COMPLETE SET*



COMPLETE SET* - MODIFICATION IS POSSIBLE AT THE REQUEST OF THE CUSTOMER



VALENCIA



Shoe upper material: vamp, back, side outer belt – genuine leather. Bootleg – artificial material. Substrate - nonwoven fabric.
Toe protection: thermoplastic toe cap (50J) or metal (200J) or composite (200J).

Shoe bottom material: set-in insole – nonwoven fabric or kevlar. Insole - formed comfortable

Sole: foam polyurethane (wear-resistant, oil and petrol resistant, acid resistant). The properties of the running surface: antistatic, anti-slip profile.

STANDART:



COMPLETE SET*



COMPLETE SET* - MODIFICATION IS POSSIBLE AT THE REQUEST OF THE CUSTOMER

HIGHT BOOTS

NORD



Shoe upper material: vamp, back – genuine leather. Adjustable in width bootleg (hight 310 mm) – artificial material. Substrate - nonwoven fabric. Anti-corrosion fittings. **Toe protection:** thermoplastic toe cap (50J) or metal (200J) or composite (200J).

Shoe bottom material: set-in insole – nonwoven fabric or kevlar. Insole - formed comfortable

Sole: foam polyurethane with ribbed forefoot (wear-resistant, oil and petrol resistant, acid resistant). The properties of the running surface: antistatic, anti-slip profile.

STANDART:



COMPLETE SET*



COMPLETE SET* - MODIFICATION IS POSSIBLE AT THE REQUEST OF THE CUSTOMER

KOMBI

Shoe upper material: vamp, back – genuine leather. Adjustable in width bootleg (hight 220 mm) – artificial material. Substrate - nonwoven fabric. Anti-corrosion fittings. **Toe protection:** thermoplastic toe cap (50J) or metal (200J) or composite (200J).

Shoe bottom material: set-in insole – nonwoven fabric or kevlar. Insole - formed comfortable

Sole: foam polyurethane with ribbed forefoot (wear-resistant, oil and petrol resistant, acid resistant). The properties of the running surface: antistatic, anti-slip profile.



STANDART:



COMPLETE SET*



COMPLETE SET* - MODIFICATION IS POSSIBLE AT THE REQUEST OF THE CUSTOMER

ARCTIC



Shoe upper material: vamp, back – genuine leather. Bootleg – artificial material (hight 310 mm). Adjustable in width bootleg (hight 220 mm) – artificial material. Substrate - nonwoven fabric. Anti-corrosion fittings.

Toe protection: thermoplastic toe cap (50J)

Shoe bottom material: main insole – microfiber

Sole: formed rubber (wear-resistant, anti-slip).

STANDART:



COMPLETE SET*



COMPLETE SET* - MODIFICATION IS POSSIBLE AT THE REQUEST OF THE CUSTOMER

HIGHT BOOTS

PVC 33SM



PVC boots are comfortable and waterproof protective work footwear, which are used to protect from water, mud, mechanical influences when performing various production tasks. Boots can be used in the closed areas and outdoors in warm season. High protection rates footwear from moisture is used in various industries: heavy industry, constructing, forestry, animal husbandry, fishing industry, mining and other fields of activity.

Made from durable PVC. The material of the upper part and sole is resistant to the aggressive effects of oils, alkalis, acids and petroleum products, resists elevated temperatures.

It has a relief protector with sufficient lugs to prevent from slipping on slippery (clay, loam) soils and provide good grip on all types of surfaces.

STANDART:



PVC 37SM

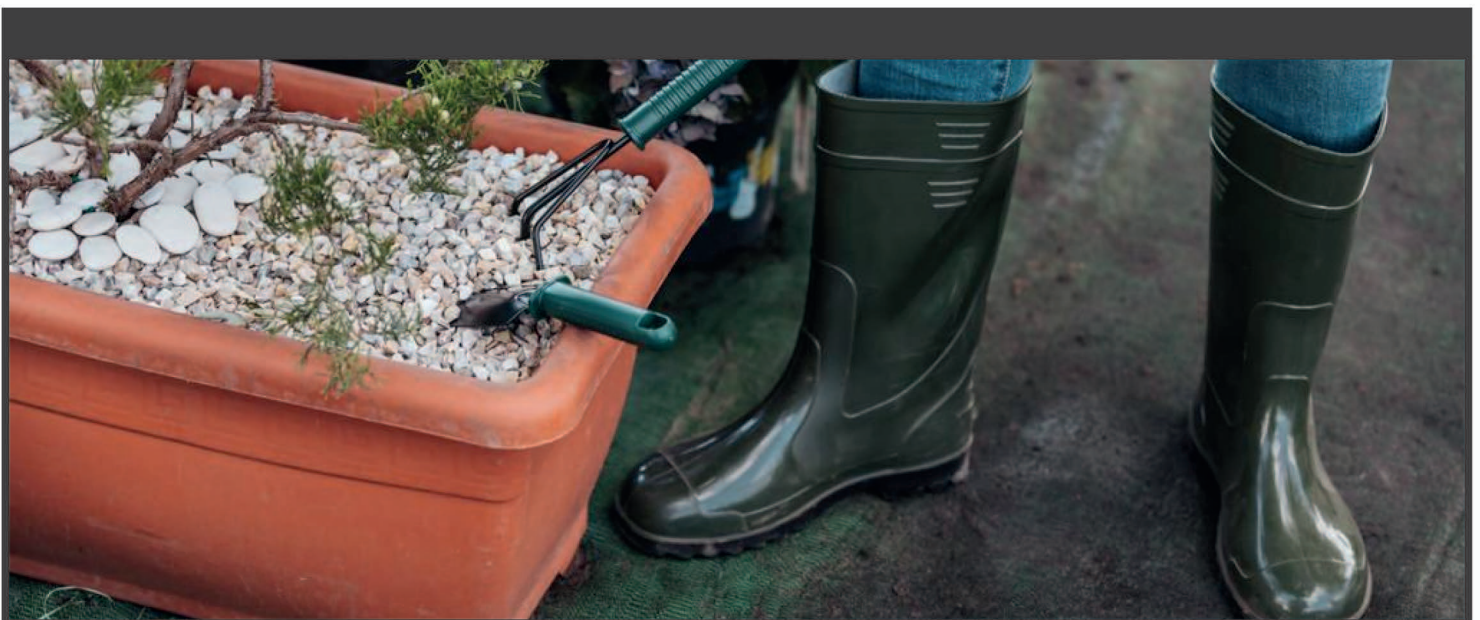
PVC boots are comfortable and waterproof protective work footwear, which are used to protect from water, mud, mechanical influences when performing various production tasks. Boots can be used in the closed areas and outdoors in warm season. High protection rates footwear from moisture is used in various industries: heavy industry, constructing, forestry, animal husbandry, fishing industry, mining and other fields of activity.

Made from durable PVC. The material of the upper part and sole is resistant to the aggressive effects of oils, alkalis, acids and petroleum products, resists elevated temperatures.

It has a relief protector with sufficient lugs to prevent from slipping on slippery (clay, loam) soils and provide good grip on all types of surfaces.



STANDART:



WORK CLOTHES

City-Master Costume

Jacket with buckles on the belt to adjust the size. Central zipper fastener, hidden by a Velcro strip. Folding collar. Decoration along the yoke with red edging. Pockets: two patch pockets with valve, two bottom mortise pockets, the pocket for the telephone. Sleeves with the reinforcement on the elbows, Velcro cuff. Pleats for freedom of the movements on the back. Double stitching with white denim thread.

Open semi-overall (with straps). Sufficient amount of functional pockets. Amplifiers in the form of pockets are installed on the knees. Elastic braid is installed on the waist for convenience at work. Voluminous special pockets, made of decorative fabric are provided to protect the knee joints. Knee pads can be inserted there.



WORK CLOTHES



City-Master semi-overall

Open semi-overall (with straps). Sufficient amount of functional pockets. Amplifiers in the form of pockets are installed on the knees. Elastic braid is installed on the waist for convenience at work. Voluminous special pockets, made of decorative fabric are provided to protect the knee joints. Knee pads can be inserted there.



Passage-master

Jacket: waist belt with central button fastener, folding collar, patch pockets.

Semi-overall: fastex straps, straight silhouette, patch pockets.

Reflective stripes.



Worker Costume

Jacket: waist belt with central button fastener, folding collar, two pockets, rolled sleeves with the cuffs.

Trousers: button fastener, belt with buckles and elastic braid. Two mortise pockets.



Performer Costume

Jacket of a straight silhouette with central side zipper. The central fastener is closed by a windproof strip with textile fasteners of the Velcro type.

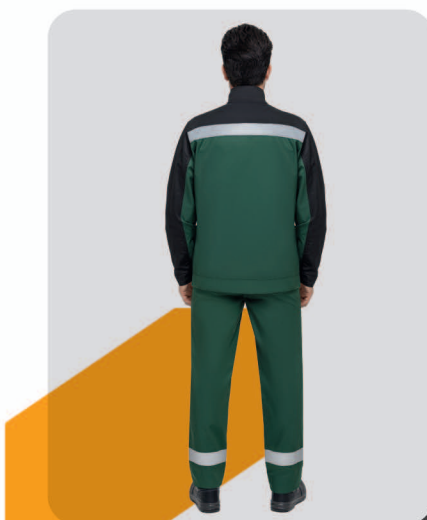
Semi-overall of a straight silhouette with sawn-on bib with the straps. Side fastener with loops and buttons.

WORK CLOTHES

Grinvik costume

Jacket with belt. Central zipper fastener. Stand-up collar. Reflective 5 cm strip along the edge of the yoke. Chest patch pockets with Velcro flaps, two lower patch pockets. Sleeves with button cuffs.

Semi-overall with straps with carabiners for length adjustment. Comfortable fastener and codpiece with buttons. Pockets: large patch pockets with a zipper fastener, side mortise pockets, patch back pocket. Side fastener and codpiece with buttons. Straps with inserts made of elastic braid. Reinforcement in the form of knee pads made of decorative fabric. Reflective stripe on the bottom for better visibility.



WORK CLOTHES



Costume Welder

Jacket: straight silhouette with a central sunk five-button fastener. Two patch pockets on the bottom. Sleeves are sewn, double-stitched. Reinforcing pads are sewn in the elbow area. Folding collar.

Straight trousers with a sewn-in belt that fastens with one loop and a button. On the front parts there are patch side pockets. In the knee area of front parts there are special reinforcing pads.



Костюм Труд

Jacket with central side button fastener, folding collar, rolled sleeves, three patch pockets.

Trousers with button fastener, belt with buckles.



Engineer costume

Jacket: straight silhouette with a central side button fastener, folding collar, patch pockets.

Trousers: straight silhouette with a belt on the clamps and the buttons fastener.



Grey Costume

Jacket: straight silhouette with a central side zipper fastener. The central fastener is closed by a windproof strip with textile fasteners of the Velcro type.

Semi-overall of a straight silhouette, with a sewn-on bib on the straps, with a button and loop fasteners on the side.

WORK CLOTHES

Titan suite

Jacket with central zipper fastener, voluminous pockets with “book” flaps.

Trousers: codpiece buttons fastener, knee pads. The bottom of the trousers is regulated by a buttonhole.

The jacket of Titan suite is insulated with padding polyester. With central zipper fastener, elbow pads, pocket on the sleeve, two pockets on the chest, slanted moisture pockets. Collar insulated with fur.





SAFETY SHOES

WORK CLOTH

PPE



 **SCAN ME!**



VALTEX.ORG.UA

WORK CLOTHES

Master costume

Jacket: waist belt with central button fastener, folding collar, two pockets, rolled sleeves with the cuffs.

Semi-overall with two side patch pockets on the trousers and one patch pocket on the chest. Side button fastener. Straps fastener – fastex.

Wide range of fabrics and colours.



WORK CLOTHES



Master Costume (trousers variation)

Jacket: waist belt with central button fastener, folding collar, two pockets, rolled sleeves with the cuffs.

Trousers: button fastener, belt with buckles and elastic braid. Two patch side pockets on the trousers and patch pockets in the knee area.

Wide range of fabrics and colours.



Signal Costume

Jacket: straight silhouette with a central buttons fastener, windproof valve, a detachable insulated lining, a fold-down collar with fastened, pads in the elbow area, patch pockets.

Vest: insulated, straight silhouette with a central buttons fastener, patch pockets.

Trousers: extended waistband, button fastener, pads in the knee area, patch pockets.



Master semi-overall

Semi-overall with two patch side pockets on the trousers and one patch pocket on the chest, side button fastener. Straps fastener – fastex.



Working robe

The robe of a straight silhouette with the central side button fastener, folding collar, rolled sleeves with cuffs, two patch pockets.

TREKKING CLOTHES

Hiker costume

Fabric: 100% polyester
Hardness 160 g/m²

Membrane coating,
wind and moisture protection

Colour: khaki

Insulation: kholosoft ultra
Hardness 250 g/m²



TREKKING CLOTHES



Fisherman (jacket)

Fabric: 53% cotton,
47% polyester
Hardness 220 g/m²

Membrane coating,
wind and moisture protection

Insulation: kholosoft ultra
Hardness 250 g/m²



Fleece Jacket (khaki)

Fabric: 100% polyester
Hardness 260-300 g/m²

Colours: black/khaki/
multicam/mm14



Fleece Jacket (black)

Fabric: 100% polyester
Hardness 260-300 g/m²

Colours: black/khaki/
multicam/mm14



Poncho Cloak

Fabric: 100% polyester
Hardness 135 g/m²

impregnated water-repellent
membrane coating

Colour: khaki

Rip-stop

TREKKING CLOTHES

Softshell jacket

Fabric: 100% polyester
Hardness 280 g/m²

Membrane coating

Colours: black/khaki



СЕРИЯ
TACTICAL



WORK CLOTHES



Shopkeeper apron

Apron with patch universal pockets in the stomach area.



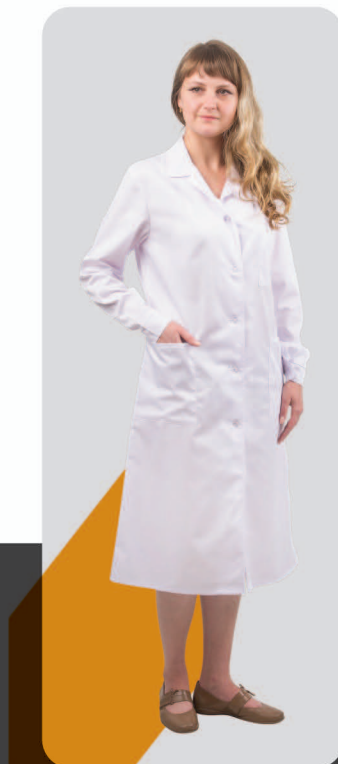
Jeans apron

Apron with two patch pockets in the stomach area.



Surgeon costume

Shirt of a straight silhouette with elbow-length, single-stitched sleeves. Two patch pockets on the bottom. Seamless back.
Straight trousers with seamless belt, which is tightened with an elastic braid to adjust the tightness of the fit around the waist.



Coarse calico robe

Semi-fitted silhouette, folding collar, long sleeve, central button fastener, patch pockets.

WORK CLOTHES



Oxford vest

Insulated vest, with zipper fastener. Mortise pockets with leaflets are on the bottom of the vest. The back of the vest is elongated. Stand-up collar.



Fleece vest

Insulated fleece vest, with zipper fastener. Mortise pockets are on the bottom of the vest. Waterproof shoulder pads and the pocket for the instruments on the right side of the chest. The back of the vest is elongated. Stand-up collar.



Signal vest

The vest of a straight silhouette with central Velcro fastener. With or without two horizontal reflective stripes.

Fabric – polyester.



Signal vest

The vest of a straight silhouette with central four-button fastener. Two horizontal reflective stripes and patch pockets.

Fabric – cotton diagonal.

PROTECTIVE EQUIPMENT



Knitted Orange



Knitted Crown



Knitted Dot



Gloves with kevlar thread Trident Condor



Welding gloves Trident Titan 8630



Combined Gloves Trident Digger



Trident Gloves 1315 made of corrugated latex



Recorex gloves with latex coating



Trident gloves with PVC coating

PROTECTIVE EQUIPMENT



Respirator-mask Dnipro 1K



Respirator-mask Dnipro 1N



Respirator ROSTOCK



Non-woven shoe covers



Polypropylene shoe covers



Non-woven hat



Helmet type A



Helmet type B



Glasses 3M Solus



FOOTWEAR - CLOTHING - PPE

CONTACT

✉ valtex1206@gmail.com

🌐 www.valtex.org.ua

📍 09117, Ukraine, Bila Tserkva.,
Heroiv Nebesnoi Sotni str. 2



SAFETY FOR FUTURE